

DemoTool #1 - Population Projections: A five-step approach to population projections (main screens of the application, advanced version)

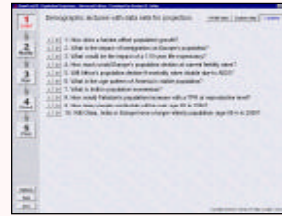
1
Load



UN input data



Custom input data



Lectures & data

With the **advanced version** of the program you have three options for loading input data: (a) You can load the *default UN* input data and parameter files, which are compatible to the 1998 Revision of the United Nations World Population Prospects; they are included for 188 countries and 30 regions worldwide. (b) You can load your own *custom* input data and parameter files; or (c) You can load *special* input data and parameter files, which correspond to the demographic lectures included. With the **professional version** you can use the UN default data and your custom input data (option (a) and (b)). With the **basic version** of this software tool you can load (and modify, if you wish) only the default UN input data sets (option (a)).

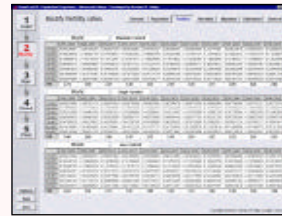
2
Modify



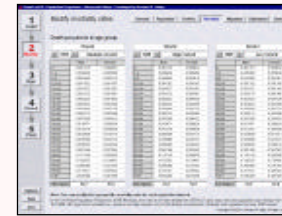
General parameters



Base population



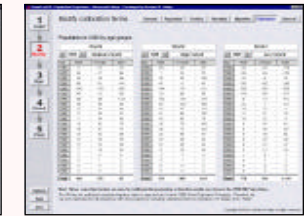
Fertility rates



Mortality rates



Migration



Calibration factors

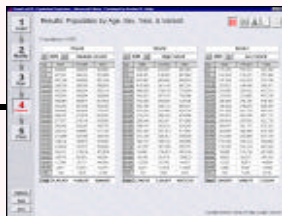
3
Run



Run projection

When you run a projection the program creates detailed output files in open ASCII format. With one click of your mouse, you can load these output files into MS-Excel, so that you can use the projection results for further analyses.

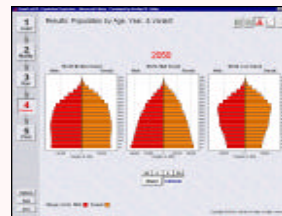
4
Result



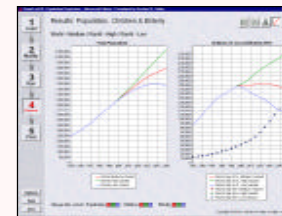
Output table 1



Output table 2



Animated pyramids



Trend charts



Population by age

The software automatically generates on-screen tables and charts from the projection results. Some of these charts are animated, so that you can better visualize population change. You can copy & paste these tables and charts into your own publication.

5
Print



Print results

These print options *automatically* generate a whole range of tables, such as the population by age, sex, year of projection and variant. With the advanced version you can also print the male and female life tables, which are internally used by the projection algorithm.